



Farbe · Anstrich · Bausanierung
Werner Heckl

Öffentl. best. u. vereidigter
Sachverständiger
der IHK Augsburg u. Schwaben,
für Farben, Anstriche u. Putze

Am Kirchberg 4
86356 Neusäß - Hainhofen
Telefon 08 21 / 48 29 92
Telefax 08 21 / 48 59 32

FAB Werner Heckl · Am Kirchberg 4 · 86356 Neusäß - Hainhofen

KEIMFARBEN GmbH & Co. KG
Keimstraße 16
86420 Diedorf

Datum

21.09.2006

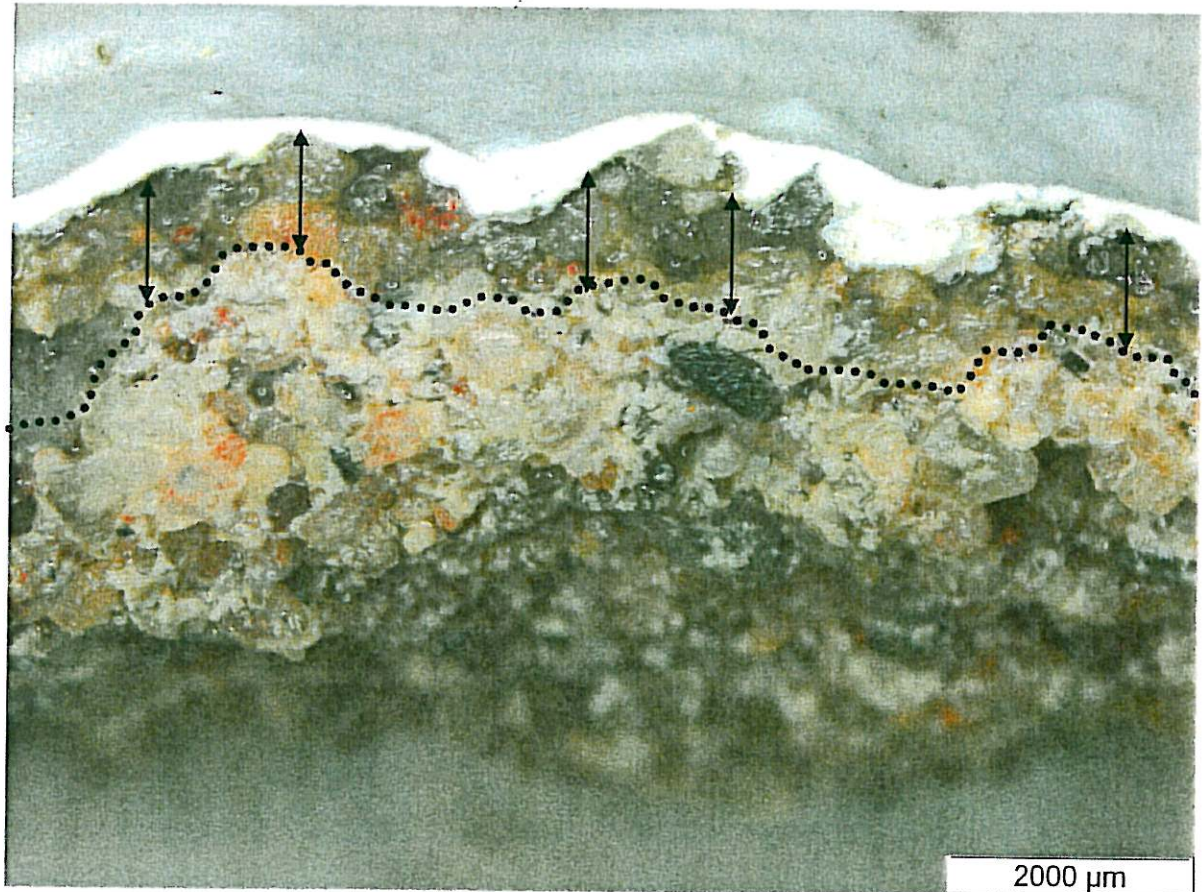
ADVISORY OPINION

Chemical setting of silicate paint „KEIM Royalan“

The setting principle of the façade paint KEIM Royalan is to be examined.

The product KEIM Royalan is a silicate façade paint. The main binder is potassium water glass. If the liquid potassium silicate is applied onto mineral substrates, it will penetrate into the substrate and form a bonding with the mineral reagents in the substrate by a chemical process. The result is a durable bond between paint and substrate.

Under the microscope the cross section of the coated render sample shows the "silicification zone" as dark coloured area.



Micrograph:
Render and coating, cross section, 7-times enlarged

Finally, it can be confirmed that the façade paint KEIM Royalan forms a bonding with the mineral substrate by a chemical reaction of the binder potassium silicate (silicification).

